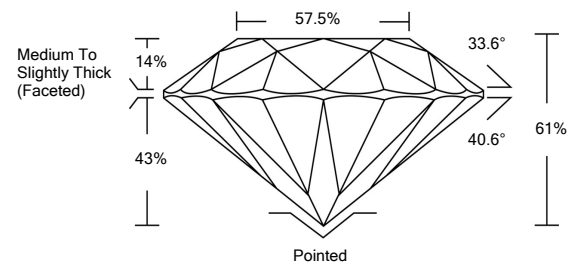




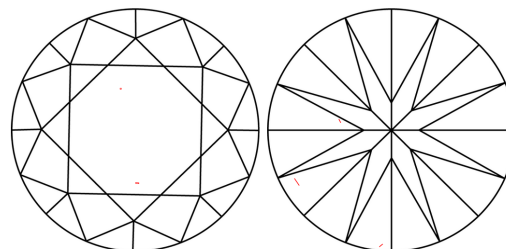
LABORATORY GROWN DIAMOND REPORT

LG508123905

PROPORTIONS



CLARITY CHARACTERISTICS



KEY TO SYMBOLS

Red symbols indicate internal characteristics.
Green symbols indicate external characteristics.

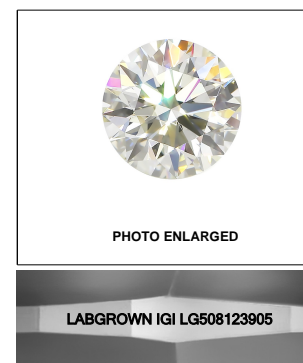
GRADING SCALES

COLOR GRADING SCALE	CL	NC	FT	VL	LT	
	COLORLESS D-F	NEAR COLORLESS G-J	FAINT K-M	VERY LIGHT N-R	LIGHT S-Z	
CLARITY (10x) GRADING SCALE	FL	IF	VVS	VS	SI	I
	FLAWLESS INTERNALLY FLAWLESS	VERY VERY SLIGHTLY INCLUDED	VERY SLIGHTLY INCLUDED	SLIGHTLY INCLUDED	INCLUDED	

The laboratory grown diamond described in this Report (Report) has been graded, tested, analyzed, examined and/or inscribed by International Gemological Institute (IGI). A laboratory grown diamond is one that has essentially the same chemical, physical and optical properties as a mined diamond, with the exception of being grown by man (a manufactured product). IGI employs and utilizes those techniques and equipment currently available to IGI, including, without limitation, 10X magnification, corrected triplet loupe, binocular microscope, master color comparison stones, non-contact-optical measuring device, Diamond Sure™, Diamond View™, Spectrophotometer and such other instruments and/or processes as deemed appropriate by IGI. This Report includes advanced security features. A duly accredited gemologist or jeweler can advise you with respect to the importance of and interrelationship between cut, color, clarity and carat weight.

THIS REPORT IS NEITHER A GUARANTEE, VALUATION, NOR APPRAISAL OF THE GEMSTONE DESCRIBED HEREIN. PLEASE REVIEW THE LIMITATIONS AND RESTRICTIONS SET FORTH ONLINE. FOR ADDITIONAL INFORMATION, IMPORTANT LIMITATIONS AND DISCLAIMERS, PLEASE GO TO WWW.IGI.ORG OR CALL 1-888-BUY-IGI.

© INTERNATIONAL GEMOLOGICAL INSTITUTE, INC.



LASERSCRIBESM

December 23, 2021

IGI Report Number

LG508123905

Description

**LABORATORY GROWN
DIAMOND**

Shape and Cutting Style

ROUND BRILLIANT

Measurements

9.25 - 9.29 X 5.66 MM

GRADING RESULTS

Carat Weight

3.01 CARATS

Color Grade

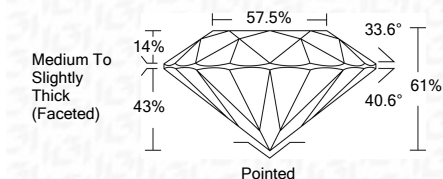
J

Clarity Grade

VS 2

Cut Grade

IDEAL



ADDITIONAL GRADING INFORMATION

Polish

EXCELLENT

Symmetry

EXCELLENT

Fluorescence

NONE

Inscription(s)

LABGROWN IGI LG508123905

Comments: This Laboratory Grown Diamond was created by Chemical Vapor Deposition (CVD) growth process and may include post-growth treatment.
Type IIa

December 23, 2021

IGI Report Number

LG508123905

Description

**LABORATORY GROWN
DIAMOND**

Shape and Cutting Style

ROUND BRILLIANT

Measurements

9.25 - 9.29 X 5.66 MM

GRADING RESULTS

Carat Weight

3.01 CARATS

Color Grade

J

Clarity Grade

VS 2

Cut Grade

IDEAL

ADDITIONAL GRADING INFORMATION

Polish

EXCELLENT

Symmetry

EXCELLENT

Fluorescence

NONE

Inscription(s)

LABGROWN IGI LG508123905

Comments: This Laboratory Grown Diamond was created by Chemical Vapor Deposition (CVD) growth process and may include post-growth treatment.
Type IIa



IGI

December 23, 2021	IGI Report No. LG508123905	3.01 CARATS	J	Pointed
ROUND BRILLIANT	9.25 - 9.29 X 5.66 MM	VS 2	IDEAL	EXCELLENT
Carat Weight	Color Grade	Clarity Grade	Cut Grade	Symmetry
9.25 - 9.29 X 5.66 MM	J	VS 2	IDEAL	EXCELLENT
Color Grade	Clarity Grade	Cut Grade	Depth	Table
J	VS 2	IDEAL	61%	57.5%
Clarity Grade	Cut Grade	Depth	Table	Grids
VS 2	IDEAL	61%	57.5%	Medium To Slightly Thick (Faceted)
Cut Grade	Depth	Table	Grids	Polish
IDEAL	61%	57.5%	Medium To Slightly Thick (Faceted)	EXCELLENT
Depth	Table	Grids	Polish	Symmetry
61%	57.5%	Medium To Slightly Thick (Faceted)	EXCELLENT	EXCELLENT
Table	Grids	Polish	Symmetry	Fluorescence
57.5%	Medium To Slightly Thick (Faceted)	EXCELLENT	EXCELLENT	NONE
Grids	Polish	Symmetry	Fluorescence	Inscriptions(s)
Medium To Slightly Thick (Faceted)	EXCELLENT	EXCELLENT	NONE	LABGROWN IGI LG508123905
Polish	Symmetry	Fluorescence	Inscriptions(s)	Comments: This Laboratory Grown Diamond was created by Chemical Vapor Deposition (CVD) growth process and may include post-growth treatment. Type IIa
EXCELLENT	EXCELLENT	NONE	LABGROWN IGI LG508123905	